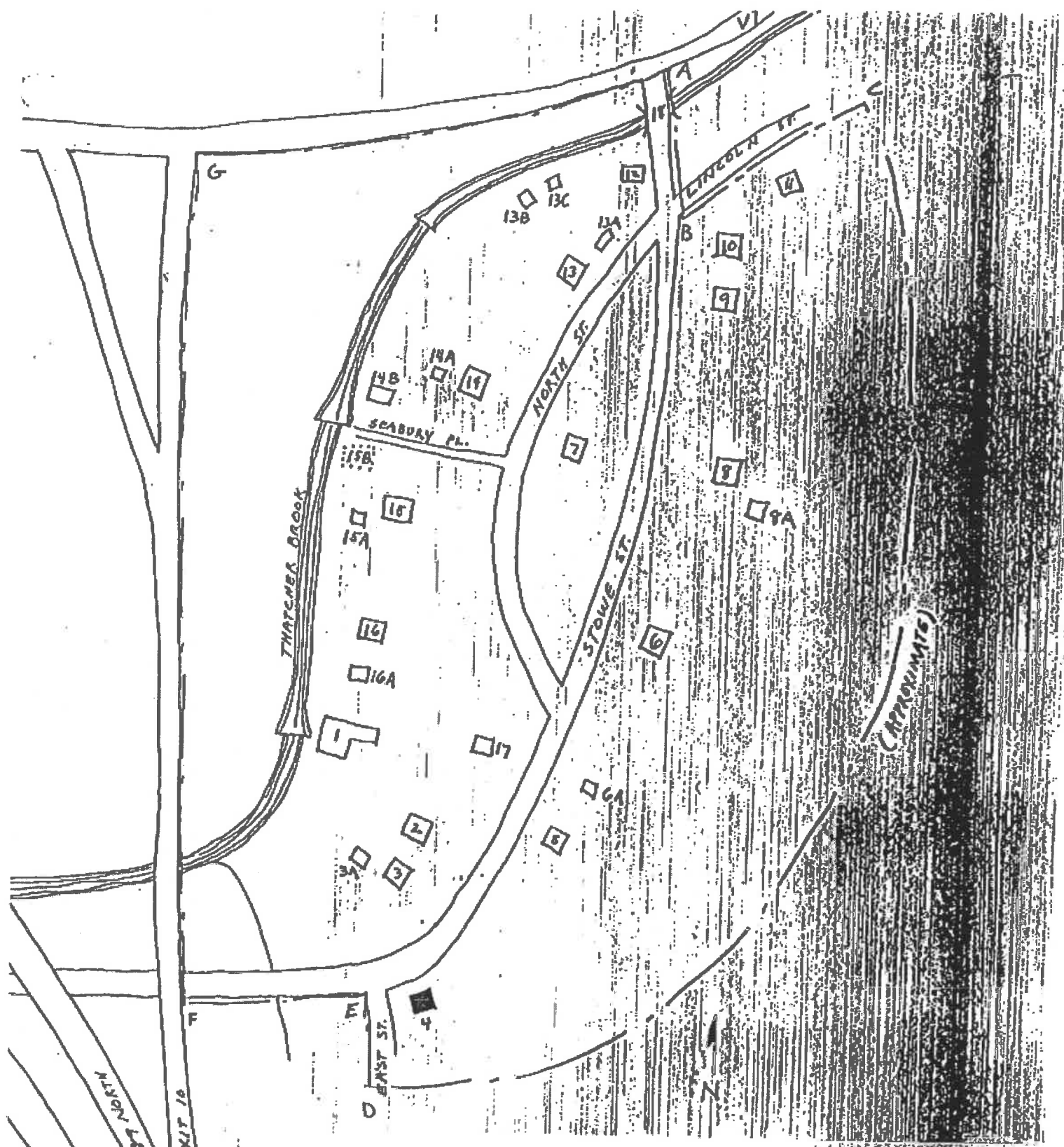


WATERBURY VILLAGE HISTORIC DISTRICT

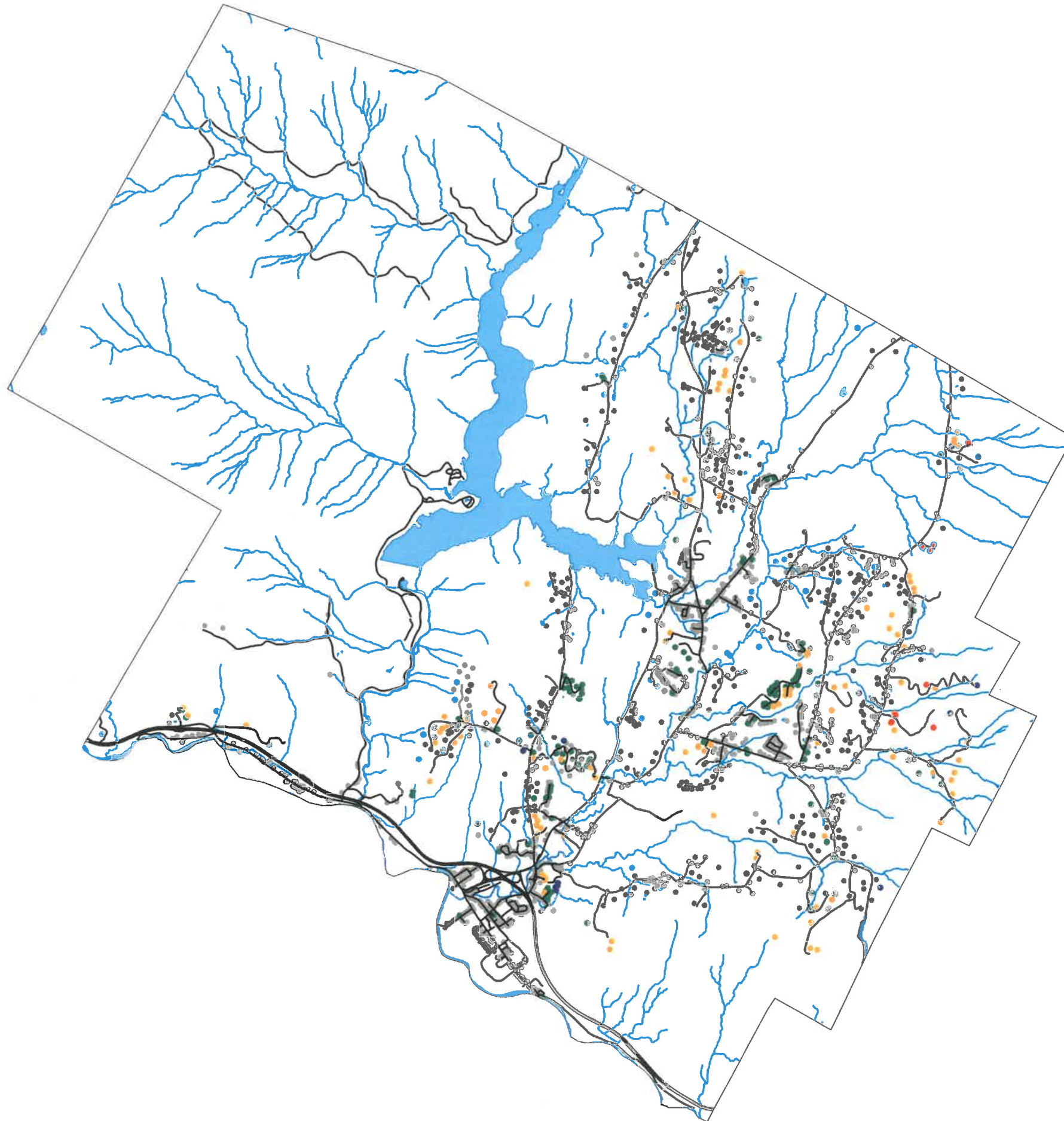
(MAP NOT DRAWN TO SCALE)

MAP 1 - 1
 WATERBURY VILLAGE HISTORIC DISTRICT



MAP 1 - 2
MILL VILLAGE HISTORIC DISTRICT

DISTRICT BOUNDARY
 NON-CONTRIBUTING BUILDING
 NOT TO SCALE REVISED 6-1-79



Distribution of Recent Residential Development
Map 1-4

Legend

- | | |
|-----------------------|----------------------------|
| Housing Growth | — Roads |
| • 2014-2015 | ■ Rivers, Lakes, and Ponds |
| • 2010-2013 | — Streams |
| • 2004-2009 | |
| • 1999-2003 | |
| • Prior to 1999 | |



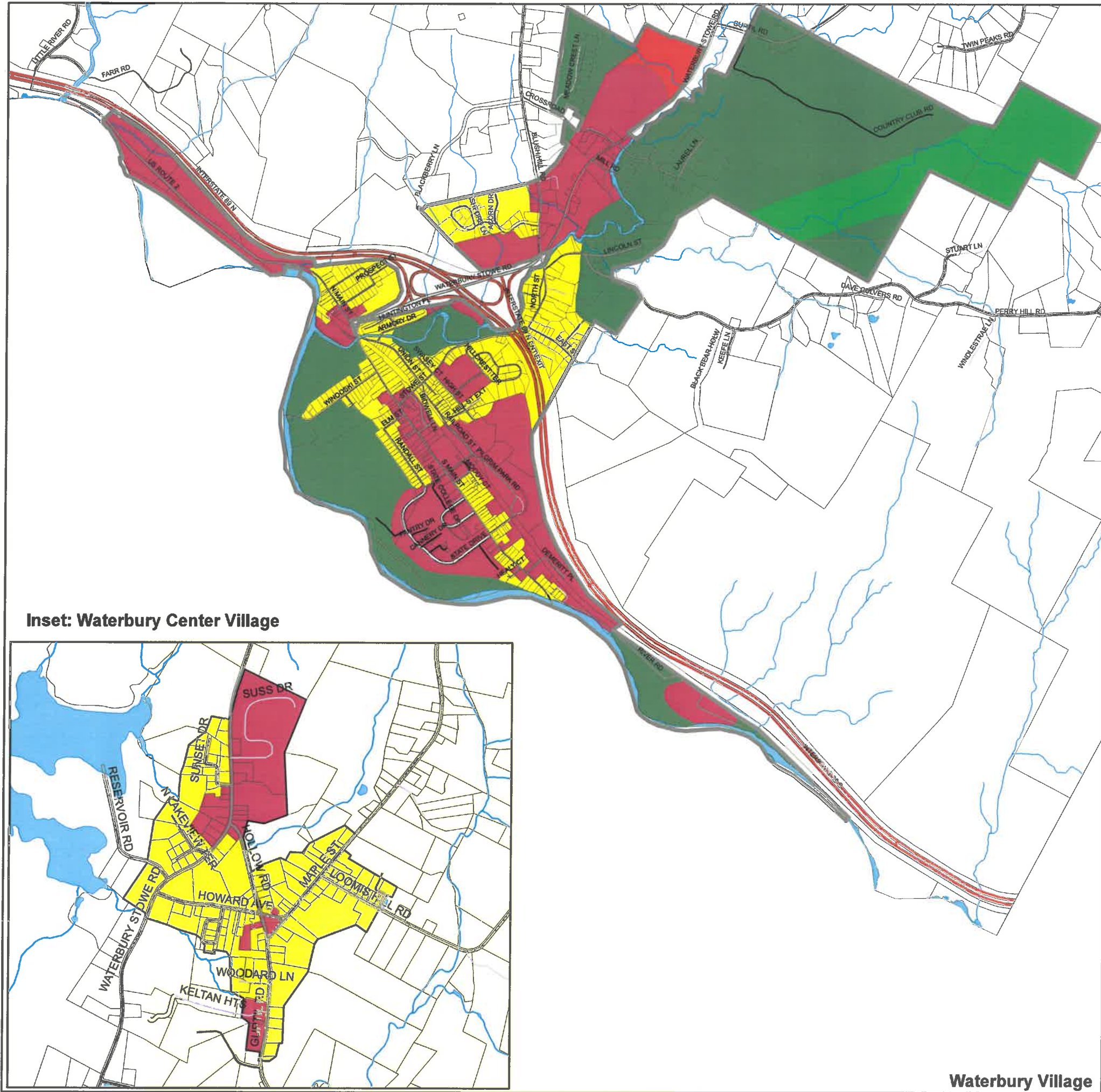
Source:
Housing Units: E911 Esites 2015
Roads: VTrans 2012
Surface Water: VHD 2008

Map created 2013 by CVRPC
N:\Towns\Waterb\TownPlan\Existing Housing Units 2013.mxd

Data is only as accurate as the original source materials.
This map is for planning purposes only.
This map may contain errors and omissions.



Future Housing Distribution Maps - Growth Centers, Map 1-5



Inset: Waterbury Center Village

WATERBURY VILLAGE GROWTH CENTER:	
Mixed Use: Commerical/Industrial	(25-35)
Village Residential	(40-55)
Rural Residential/Agricultural	(25-35)
SUBTOTAL:	(90-125 units)
WATERBURY CENTER VILLAGE GROWTH CENTER:	
Mixed Use: Commerical/Industrial	(10-14)
Village Residential	(20-35)
SUBTOTAL:	(30-42 units)
AREAS OUTSIDE GROWTH CENTERS	
Route 100 Corridor	(20-27)
Rural Residential/Agricultural	(90-120)
Forest	(15-30)
SUBTOTAL:	(125-334)
TOTAL IN ALL AREAS:	(250-334 units)

Legend

Zone	Roads
 Forest	Paved Public Roads
 Route 100 Corridor	Unpaved Public Roads
 Rural Residential/Agricultural	State Forest Highway
 Village Resident	Paved Private Roads
 Mixed Use	Unpaved Private Roads
Growth Center Village Area	Interstate
Waterbury Parcels	Rivers, Lakes, and Ponds
	Streams



Source:
 Parcels: Waterbury, CVRPC 2011
 Waterbury Future Land Use: 2002
 Roads: VTrans 2012
 Surface Water: VHD 2008

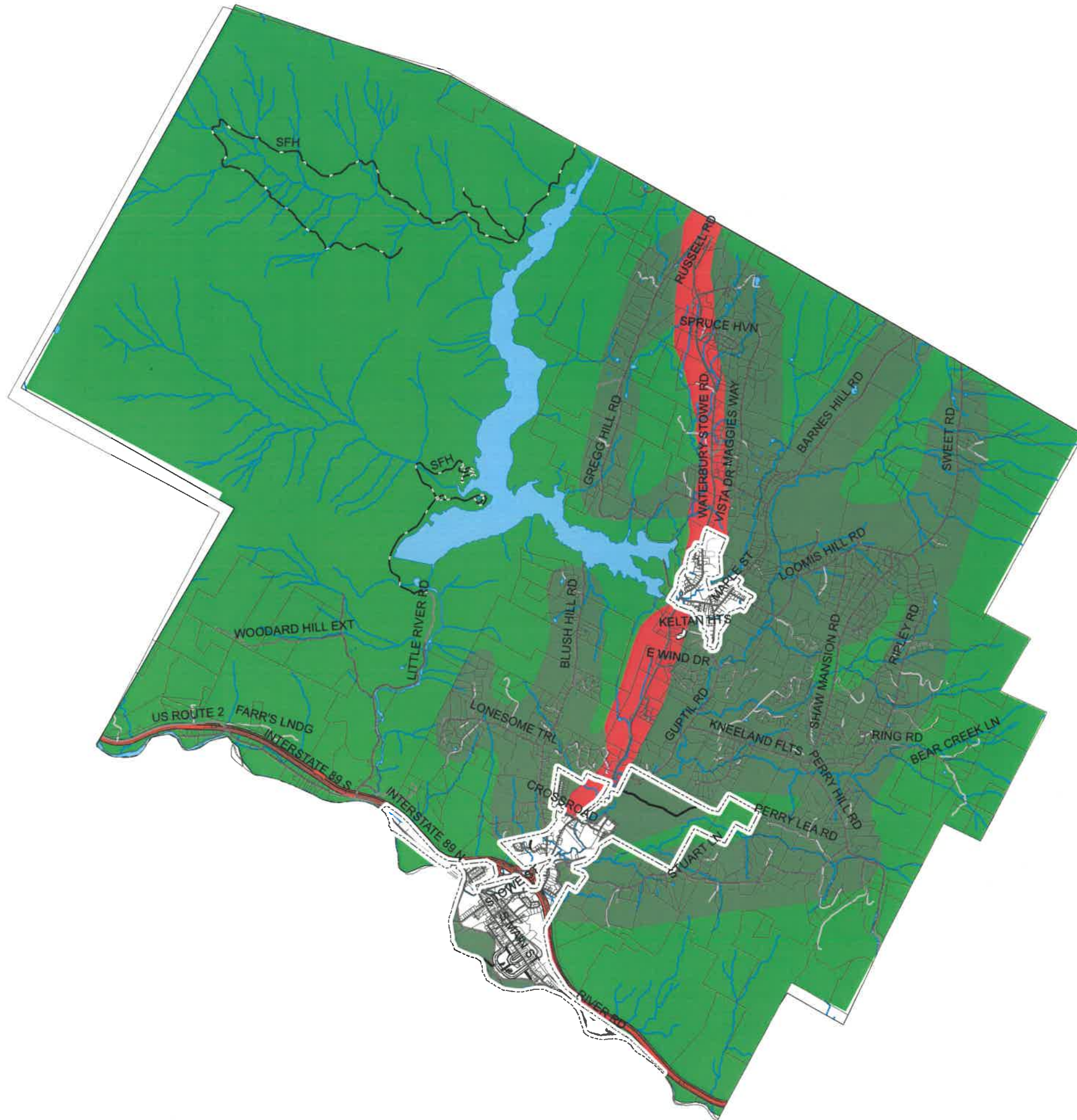
Map created 2013 by CVRPC
 Path: N:\Towns\Waterb\TownPlan\Future Land Use- village-table.mxd

Data is only as accurate as the original source materials.
 This map is for planning purposes only.
 This map may contain errors and omissions.



Waterbury Village

Future Housing Distribution Maps - Town Map, Map 1-6



WATERBURY VILLAGE GROWTH CENTER:

Mixed Use: Commerical/Industrial	(25-35)
Village Residential	(40-55)
Rural Residential/Agricultural	(25-35)
SUBTOTAL:	(90-125 units)

WATERBURY CENTER VILLAGE GROWTH CENTER:

Mixed Use: Commerical/Industrial	(10-14)
Village Residential	(20-35)
SUBTOTAL:	(30-42 units)

AREAS OUTSIDE GROWTH CENTERS

Route 100 Corridor	(20-27)
Rural Residential/Agricultural	(90-120)
Forest	(15-30)
SUBTOTAL:	(125-334)

TOTAL IN ALL AREAS: (250-334 units)

Legend

Zone	Roads
Forest	Paved Public Roads
Growth Center	Unpaved Public Roads
Route 100 Corridor	State Forest Highway
Rural Residential/Agricultural	Paved Private Roads
Growth Center	Unpaved Private Roads
WaterburyParcels2011	Interstate
	Rivers, Lakes, and Ponds
	Streams



Source:
Waterbury Town Land Use: 2002
Roads: VTrans 2012
Surface Water: VHD 2008

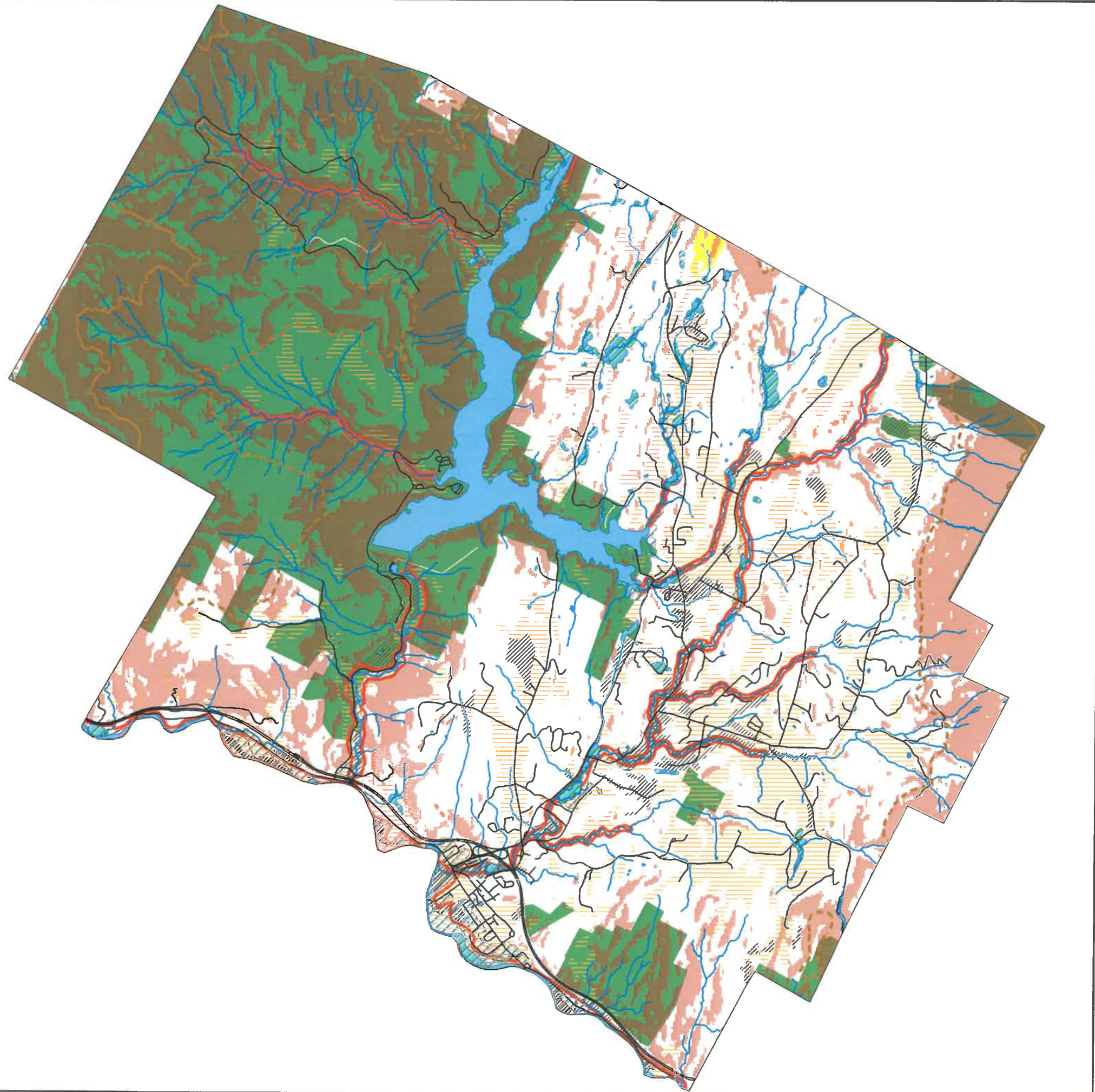
Map created 2013 by CVRPC
Path: N:\Towns\Waterb\TownPlan\Future Land Use Town- table.mxd

Data is only as accurate as the original source materials.
This map is for planning purposes only.
This map may contain errors and omissions.



Waterbury Natural Features Map

Map 2-1



Legend

- Prime Agricultural Soils
- Statewide Agricultural Soils
- Slopes Greater Than 25%
- Special Flood Hazard Area (100 Year Flood Zone)
- River Corridor
- Class 2 Wetlands
- Rivers, Lakes, and Ponds
- Streams
- Roads
- 1500 Foot Contour
- 2500 Foot Contour
- Public Lands
- Conserved Land



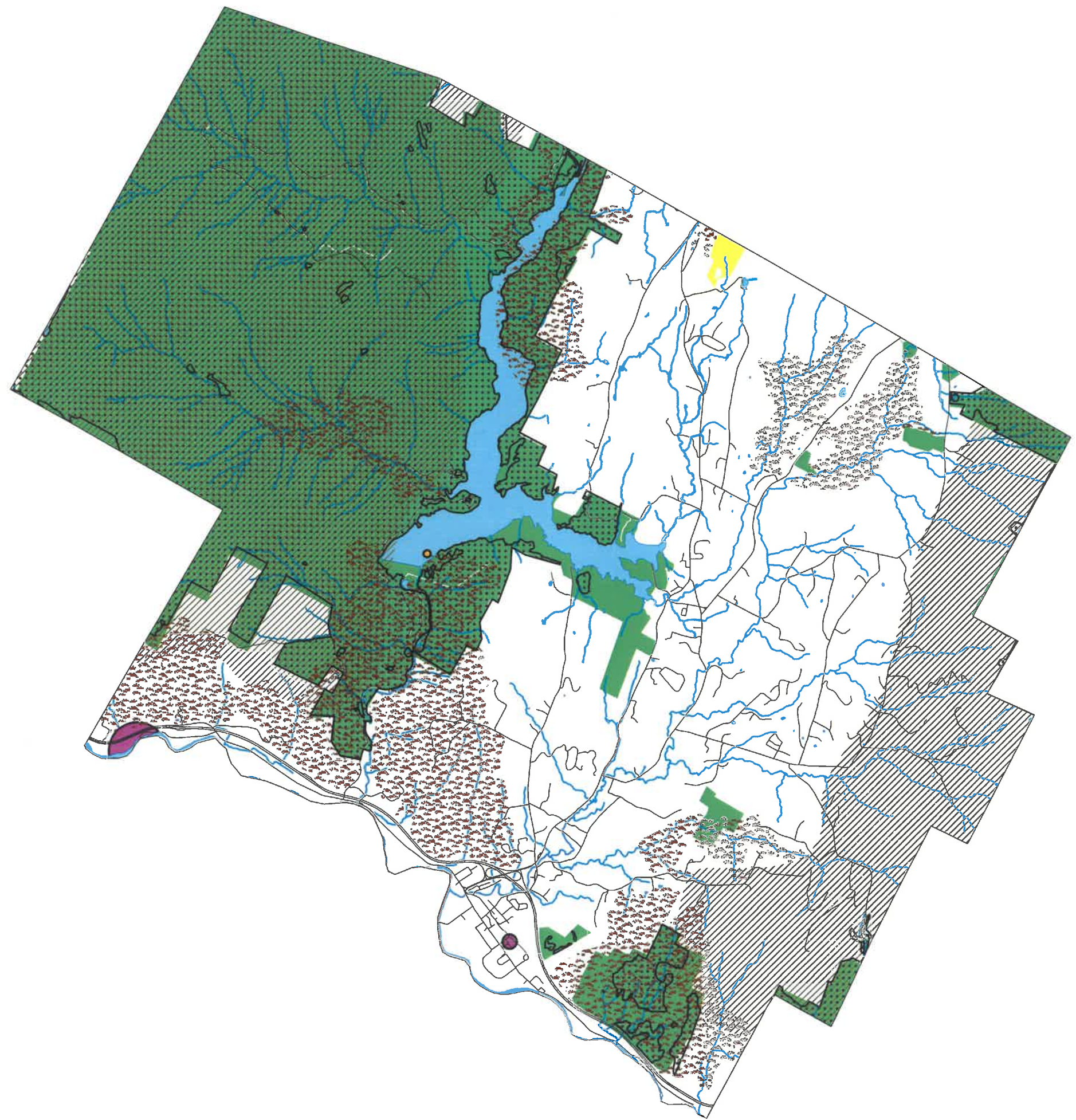
Source:
 River Corridor: State Mod 2018
 Special Flood Hazard Area: FEMA 2015
 Roads: VTrans 2012
 Surface Water: VHD 2008

Map created 2013 by CVRPC Updated 2018
 Path: N:\Towns\Waterb\TownPlan\Natural Resources.mxd

Data is only as accurate as the original source materials.
 This map is for planning purposes only.
 This map may contain errors and omissions



WATERBURY WILDLIFE RESOURCES Map 2-2



Legend

-  Deer Wintering Yards
-  Bear Habitat
-  Rivers, Lakes, and Ponds
-  Streams
-  Public Lands
-  Conserved Land
- Natural Heritage Sites (Significant Natural Communities, Rare, Threatened, and Endangered Species)**
-  Animal Species
-  Plant Species
-  Significant Natural Community



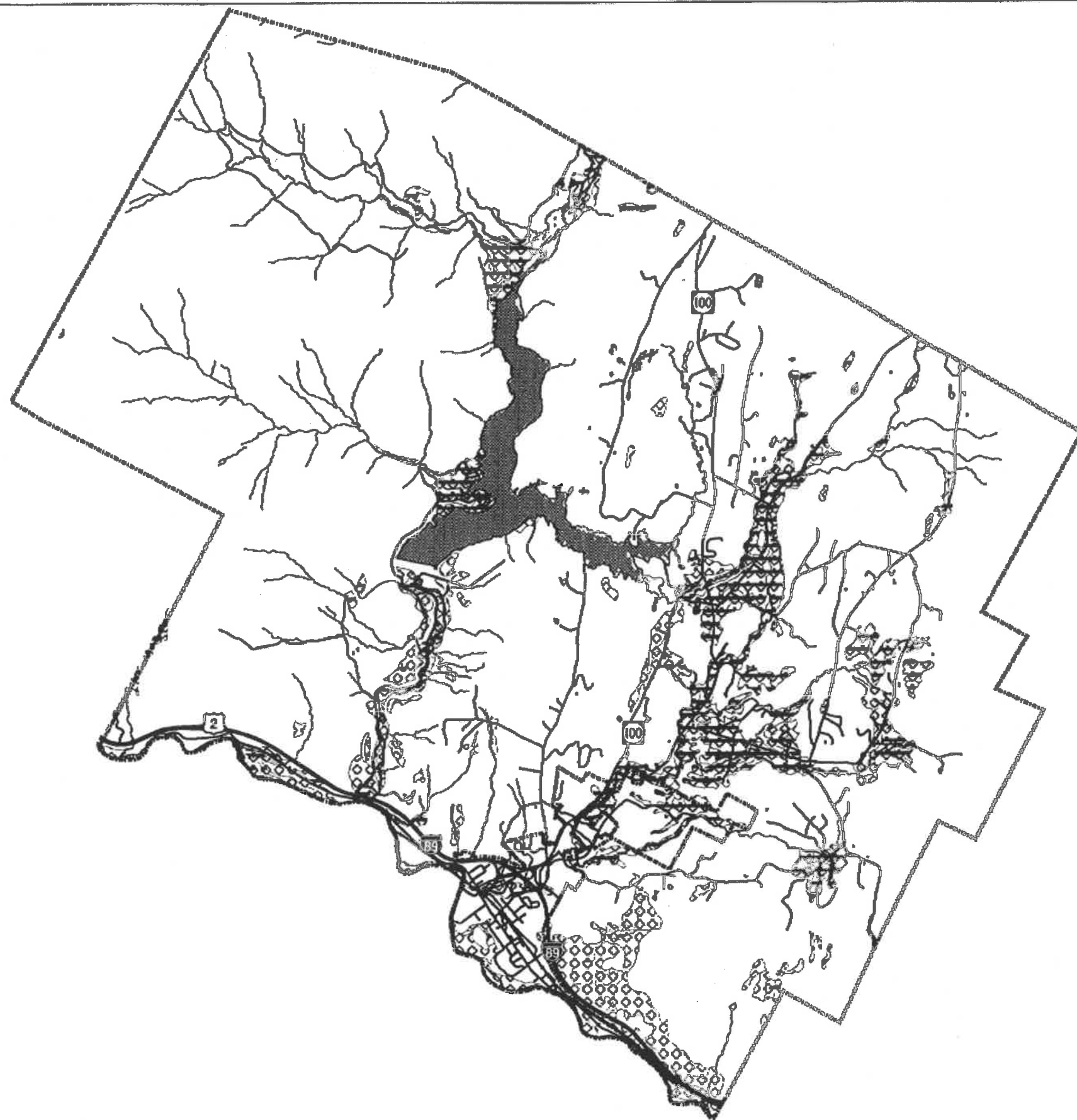
Source:
 Deer Wintering Yards: VT ANR 2010.
 Bear Habitat: VT ANR 1989.
 Natural Heritage Sites: Vermont Nongame and Natural Heritage Program and VT ANR 2013.
 Conserved Lands: Vermont Conserved Land Database
 Roads: VTrans 2012
 Surface Water: VHD 2008

Map created 2013 by CVRPC
 Path: N:\Towns\Waterb\TownPlan\Wildlife Resources.mxd




Data is only as accurate as the original source materials.
 This map is for planning purposes only.
 This map may contain errors and omissions.



WATERBURY MINERAL RESOURCES MAP



Potential Source

-  Sand
-  Gravel
-  Lake/River
-  Perennial Stream
-  Town/Village Boundary
-  Roads
-  Railroads



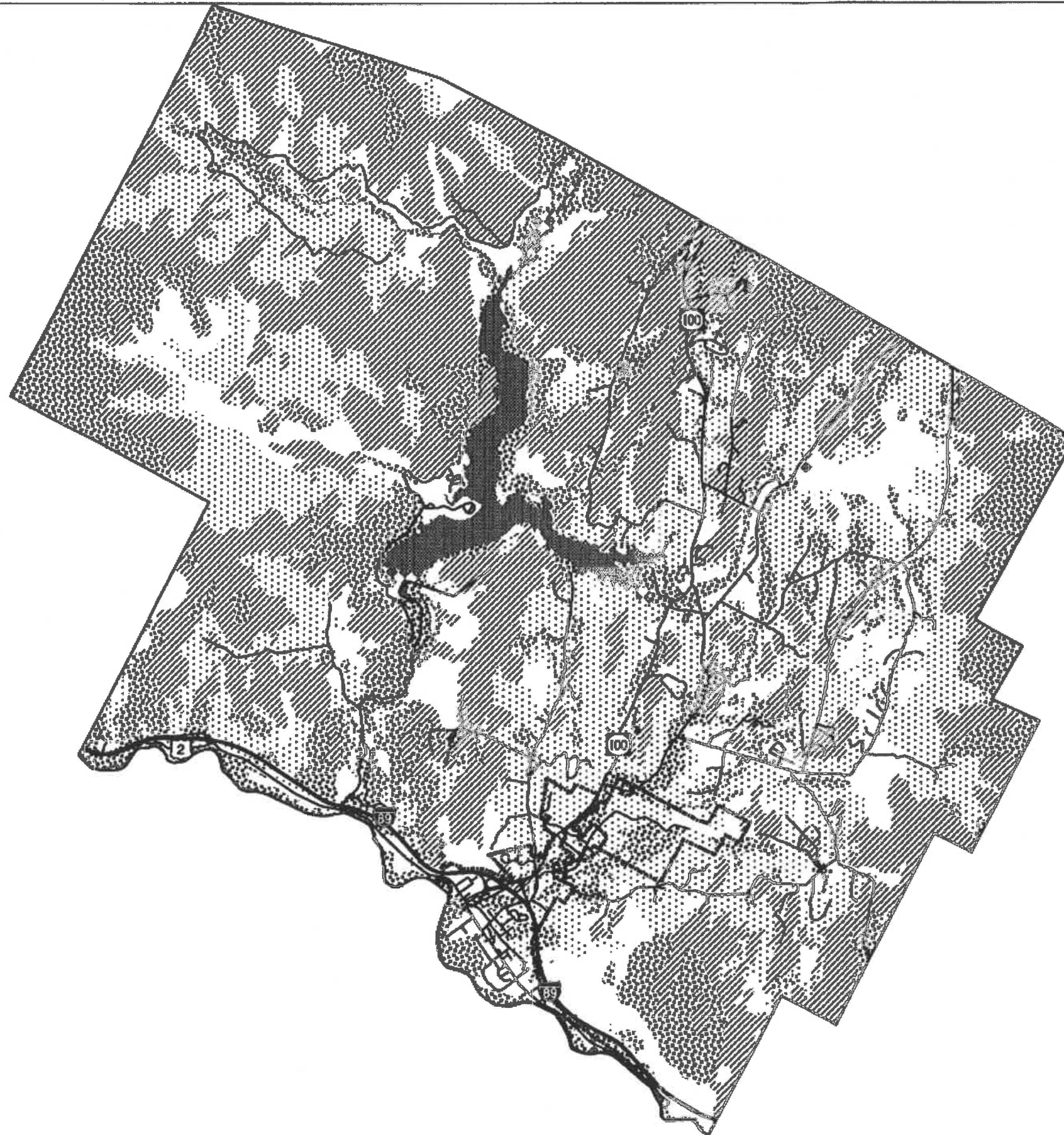
SOURCE:
 Soils Data: Optically Scanned from 1:20,000
 USDA-NRCS soils maps, 1992.
 Surface Waters: CVRPC Surface Waters Data,
 1:5,000, 1995-99.
 Town Boundary: USGS Topographic Map, 1:24,000.

Map Created 10-31-02 by W.R. Toussaint, CVRPC







Data is only as accurate as the original source materials.
 This map is for planning purposes only.
 This map may contain errors and omissions.



WATERBURY SOIL SUITABILITY MAP



Septic System Suitability Classes

	Conventional
	Non-Conventional
	Marginally Suitable
	Unsuitable
	Not Rated
	Lake/River



SOURCE:
 Soils Data: Optically Scanned from 1:20,000
 USDA-NRCS soils maps, 1992.
 Surface Waters: CVRPC Surface Waters Data,
 1:5,000, 1985-96.
 Town Boundary: USGS Topographic Map, 1:24,000.

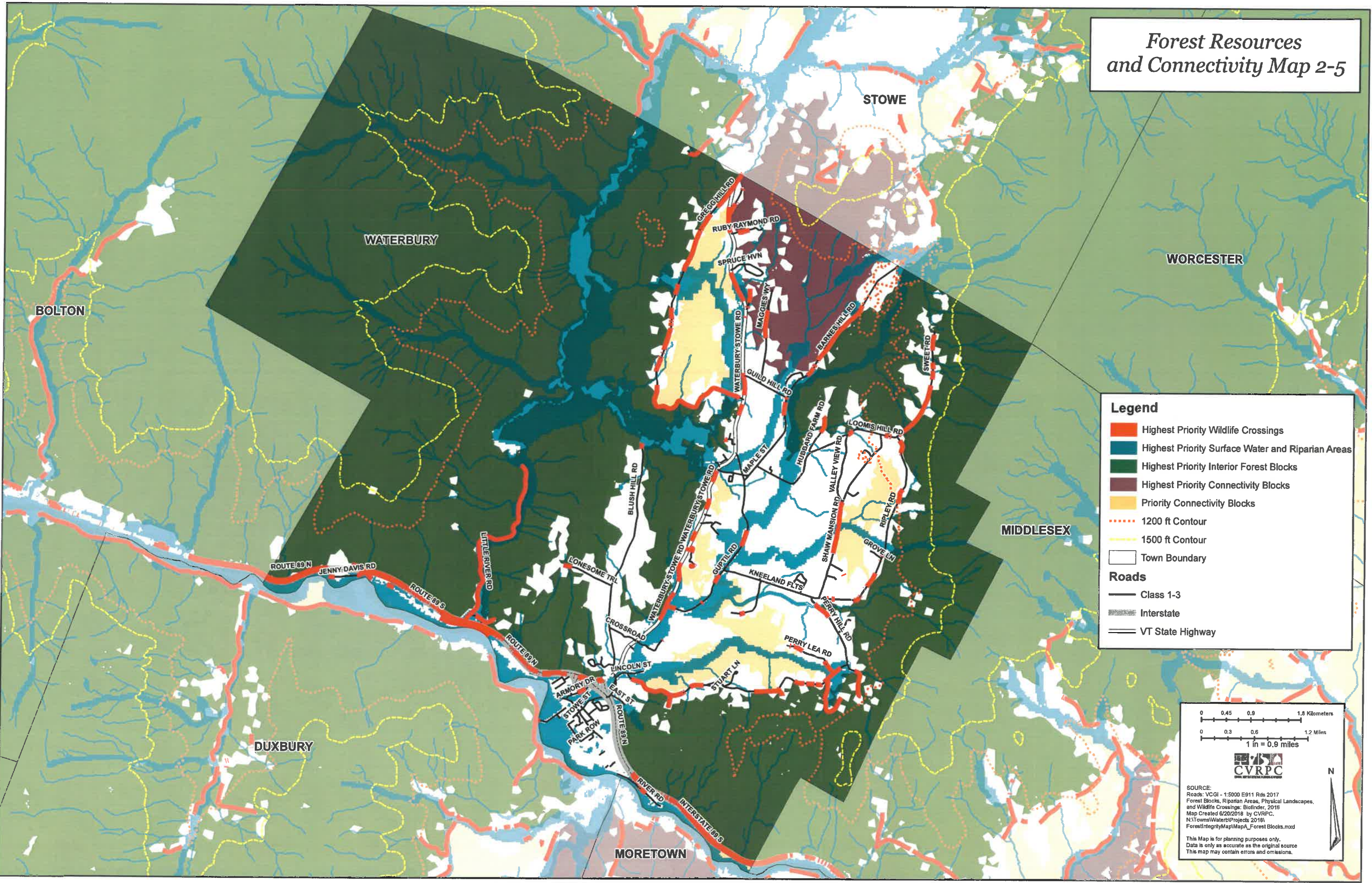


Map updated 9-10-2003 by WR Toussaint, CVRPC.
 N:\towns\waterb\soilsu1_sep03.apr

Data is only as accurate as the original source materials.
 This map is for planning purposes only.
 This map may contain errors and omissions.

Map 2-4

Forest Resources and Connectivity Map 2-5



Legend

- █ Highest Priority Wildlife Crossings
- █ Highest Priority Surface Water and Riparian Areas
- █ Highest Priority Interior Forest Blocks
- █ Highest Priority Connectivity Blocks
- █ Priority Connectivity Blocks
- ⋯ 1200 ft Contour
- ⋯ 1500 ft Contour
- Town Boundary

Roads

- Class 1-3
- Interstate
- VT State Highway

0 0.45 0.9 1.8 Kilometers
 0 0.3 0.6 1.2 Miles
 1 in = 0.9 miles

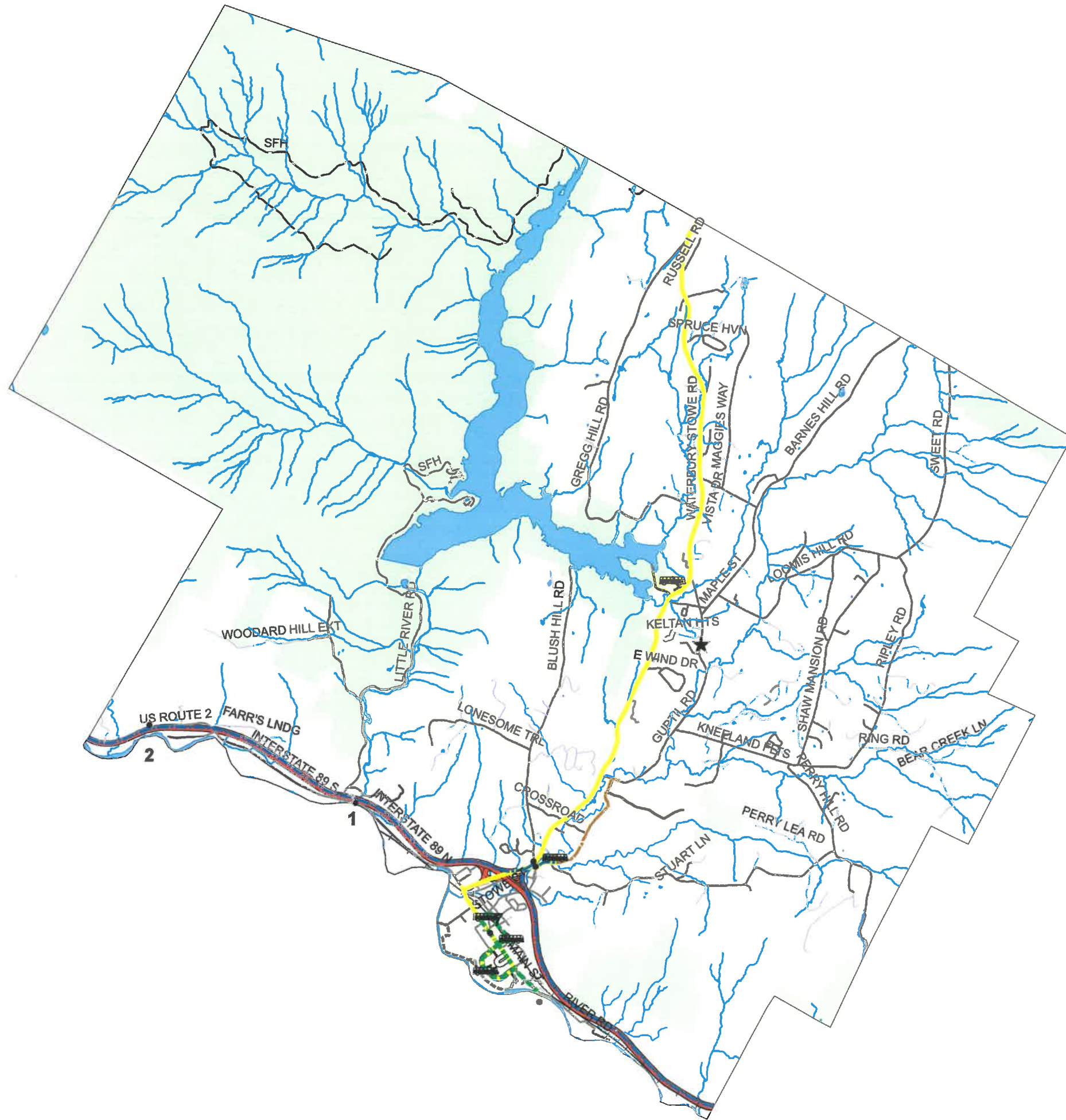
CVRPC
 CONNECTICUT VALLEY RURAL PARTNERSHIP

SOURCE:
 Roads: VCGI - 1:5000 E911 Rds 2017
 Forest Blocks, Riparian Areas, Physical Landscapes,
 and Wildlife Crossings: Biofinder, 2016
 Map Created 6/20/2018 by CVRPC.
 N:\Towns\Waterbury\Projects 2018\
 ForestIntegrityMap\MapA_Forest Blocks.mxd

This Map is for planning purposes only.
 Data is only as accurate as the original source
 This map may contain errors and omissions.

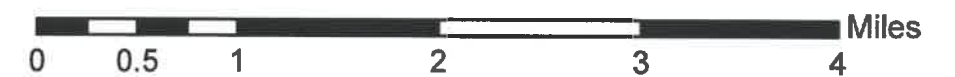
WATERBURY TRANSPORTATION: Town Map Map 3-1

Id	Project Type	Road	Description
1	Bridge	US 2	B44 Over Little River
2	Roadway Project	US 2	Rock cut remediation



Legend

- Cross Vermont Trail
- Community Path
- Link Express
- Waterbury Commuter
- Route 100 Commuter
- Commuter Stops
- ★ Town Highway Garage
- Transportation Projects
- Rail Road
- Waterbury Park and Ride
- Rivers, Lakes, and Ponds
- Streams
- Roads**
- Paved Public Roads
- Unpaved Public Roads
- State Forest Highway
- Paved Private Roads
- Unpaved Private Roads
- Interstate



Source:
 Cross Vermont Trail: CVTA 2010
 Waterbury Community Path: CVRPC 2011
 Commuter Routes: CVRPC, GMTA 2013
 Commuter Stops: CVRPC, GMTA 2013
 Rail Rds and Station: VCGI, VTrans.
 Roads: VTrans 2012
 Surface Water: VHD 2008

Map created 2013 by CVRPC updated 2018
 Path: N:\Towns\Waterb\TownPlan\Transportation.mxd

Data is only as accurate as the original source materials.
 This map is for planning purposes only.
 This map may contain errors and omissions.



WATERBURY TRANSPORTATION: Waterbury Village Map Map 3-2

Id	Project Type	Road	Description
3	Bridge	Stowe ST	BR 36 over Thatcher Brook
4	Pedestrian Project	VT 100/Stowe St	Colbyville sidewalks Phase 1
5	Roadway Project	US 2/VT100	Reconstruct Main Street
6	Bike and Pedestrian Project	VT 100	Crossett Brook School Area

Legend

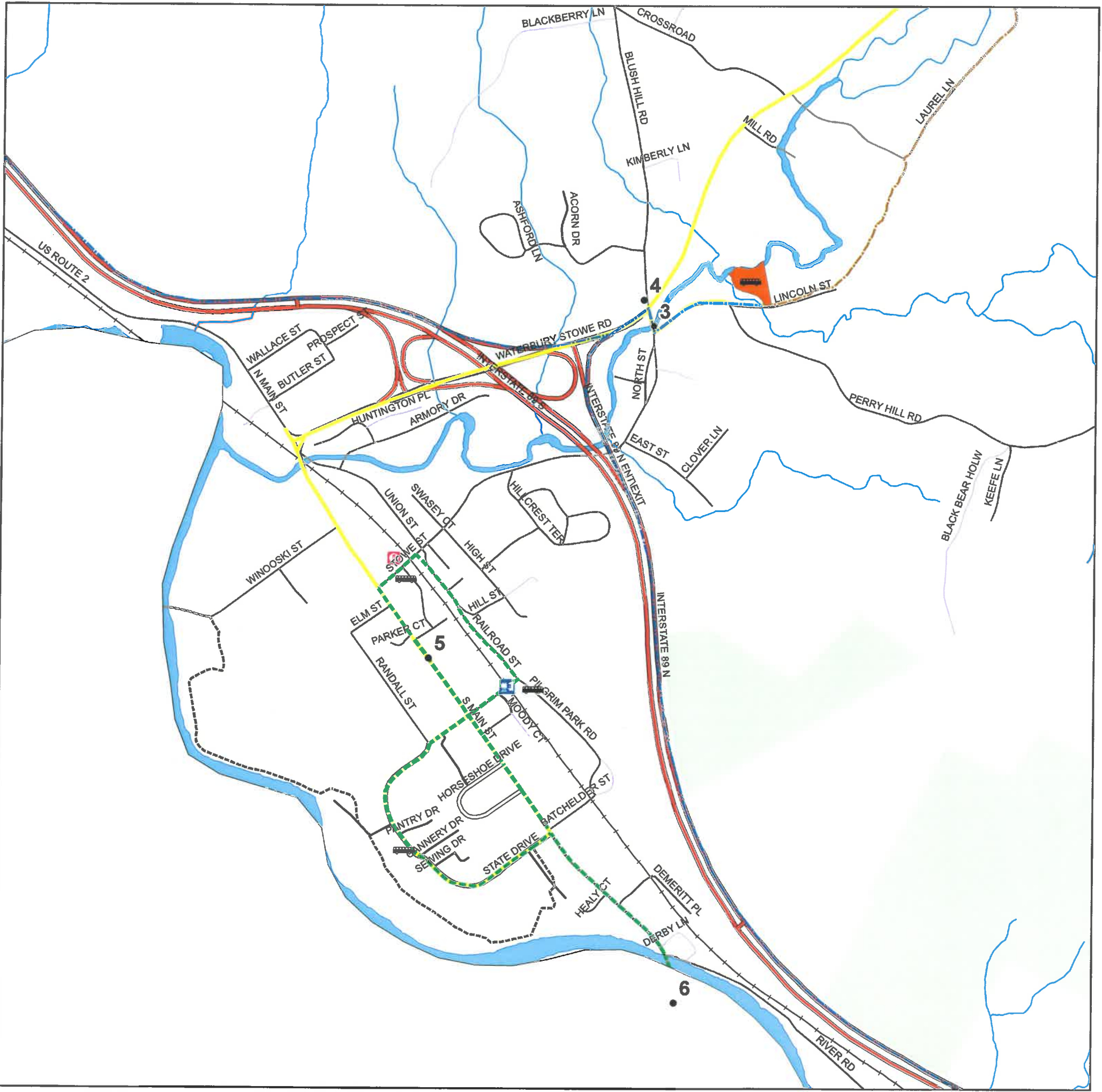
- Cross Vermont Trail
- Community Path
- Waterbury Commuter
- Route 100 Commuter
- Link Express
- Commuter Stops
- Rail Rd Station
- Town Highway Garage
- Senior Meal Site
- Transportation Projects
- Rail Road
- Waterbury Park and Ride
- Rivers, Lakes, and Ponds
- Streams
- Roads**
- Paved Public Roads
- Unpaved Public Roads
- State Forest Highway
- Paved Private Roads
- Unpaved Private Roads
- Interstate

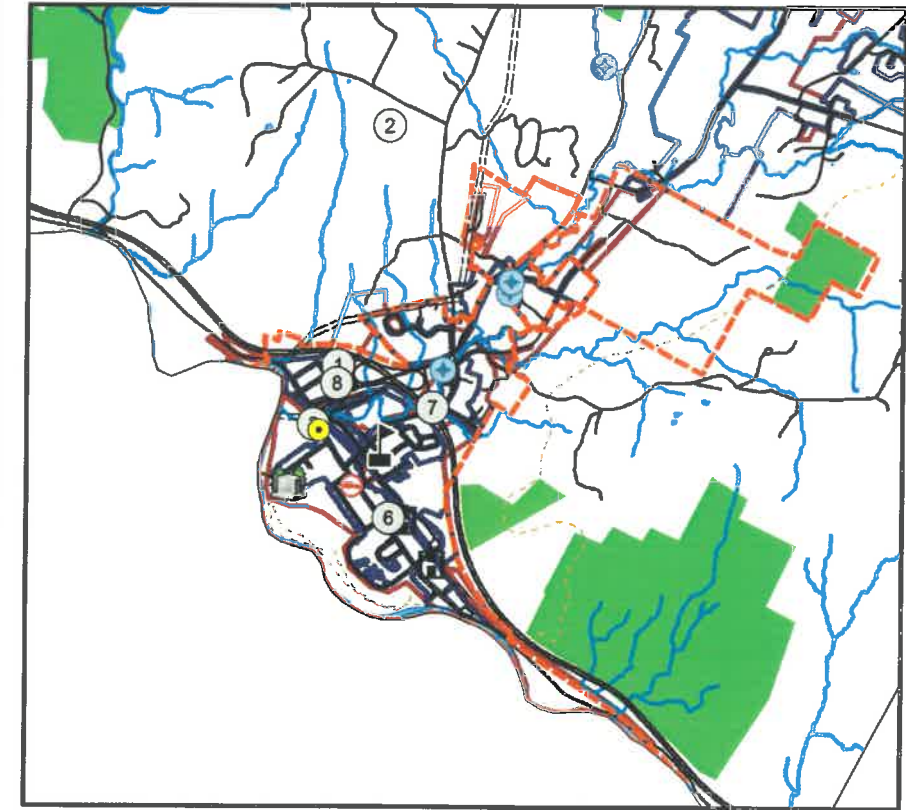
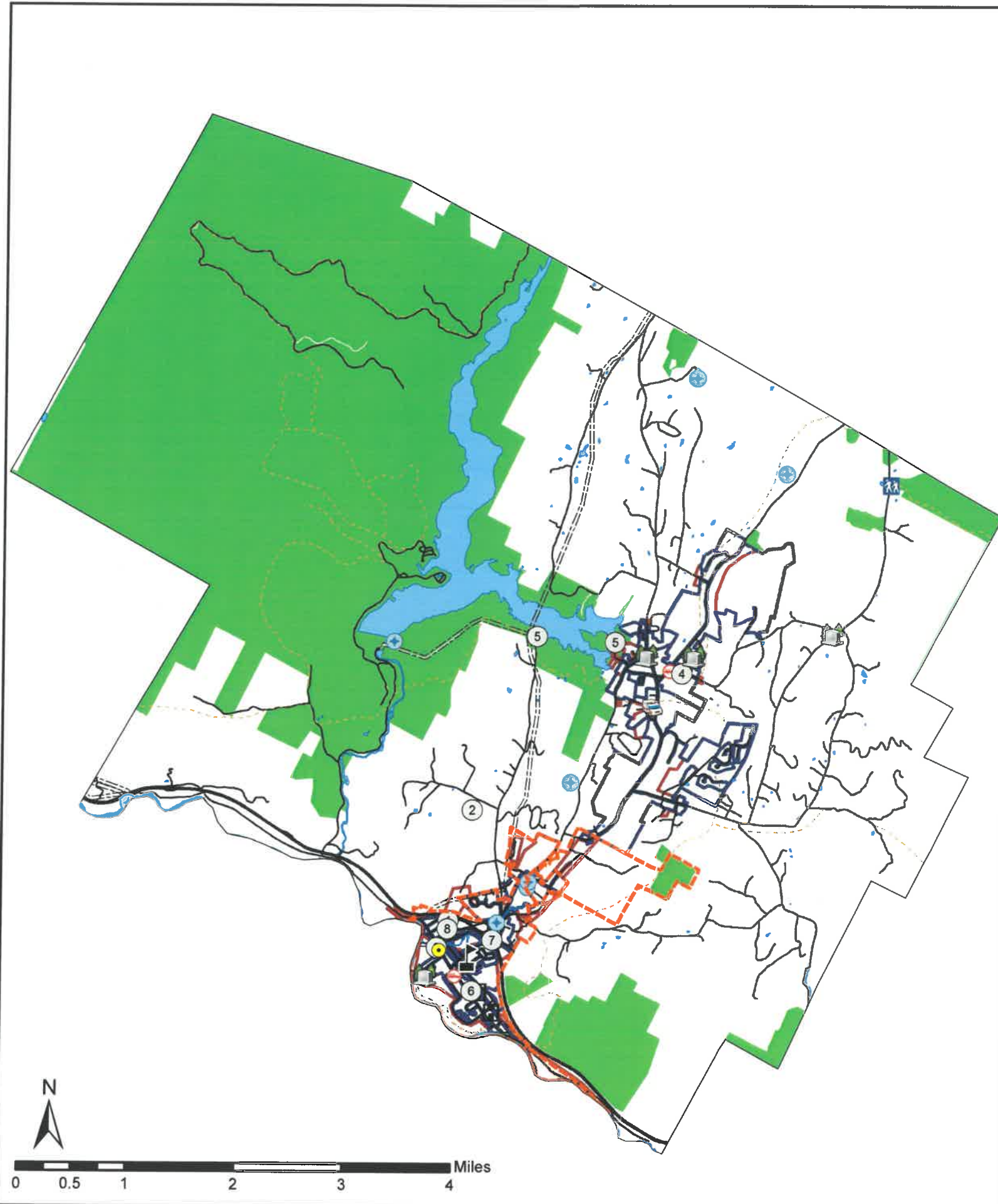


Source:
 Cross Vermont Trail: CVTA 2010
 Waterbury Community Path: CVRPC 2011
 Commuter Routes: CVRPC, GMTA 2013
 Commuter Stops: CVRPC, GMTA 2013
 Rail Rds and Station: VCGI, VTrans.
 Roads: VTrans 2012
 Surface Water: VHD 2008

Map created 2013 by CVRPC updated 2018
 Path: N:\Towns\Waterb\TownPlan\Transportation- village.mxd

Data is only as accurate as the original source materials.
 This map is for planning purposes only.
 This map may contain errors and omissions.





Waterbury Facilities and Services Map
Map 4-1

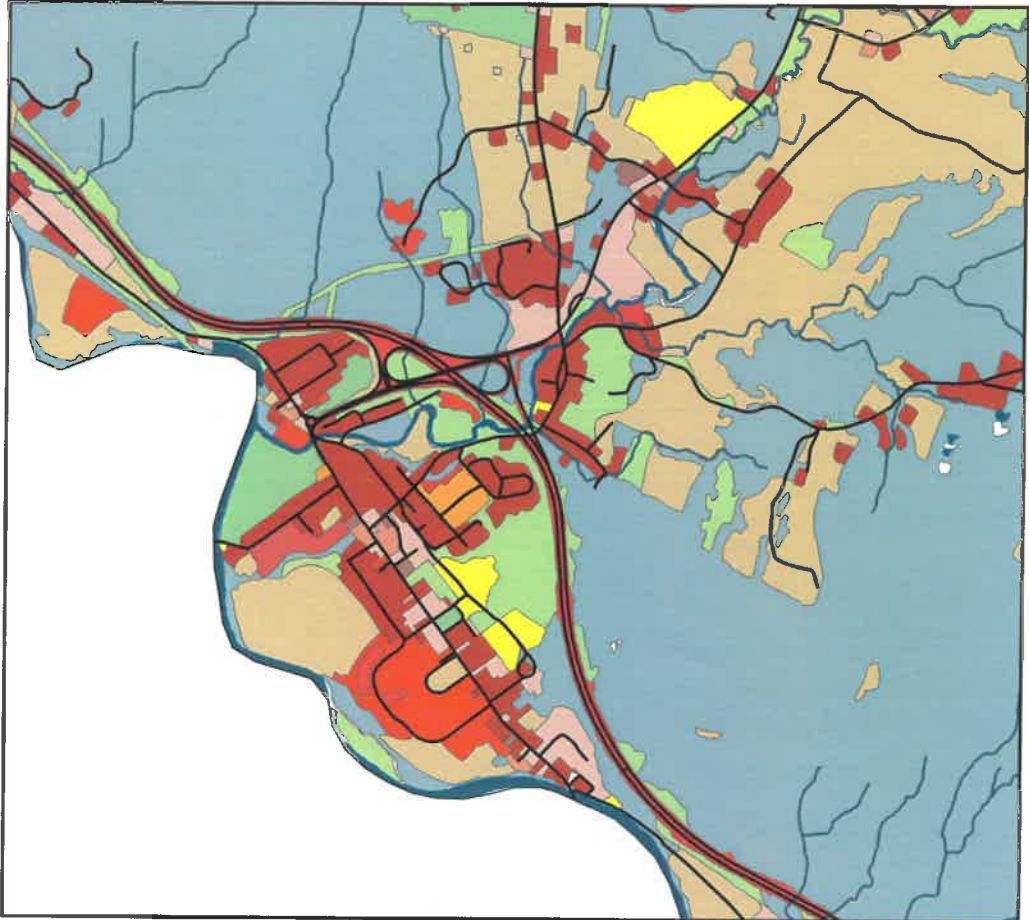
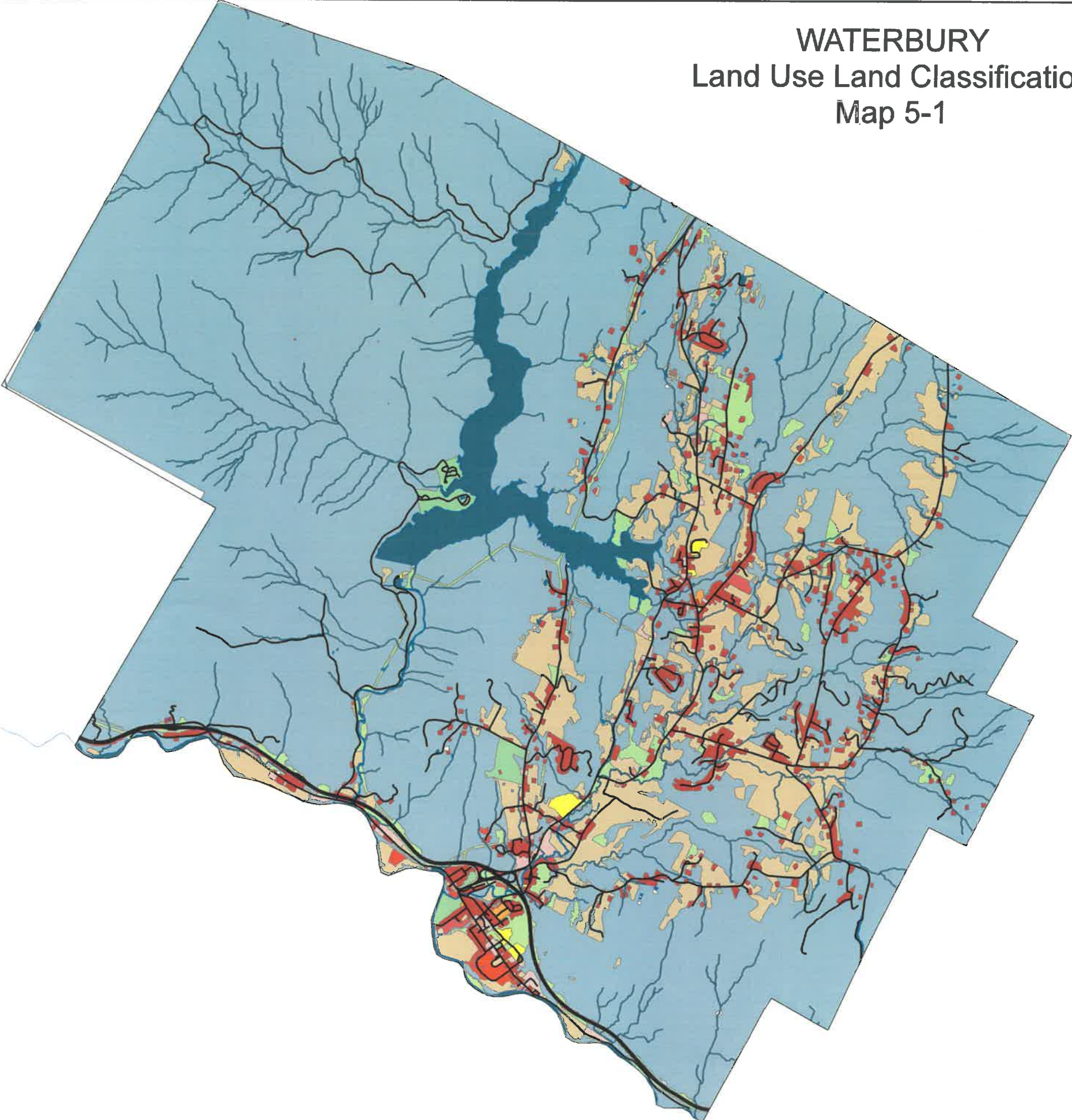
Legend

- Waterbury Municipal Center and Library
 - Edward Farrar Utility District
 - Water System
 - Sewer System
 - Electric Transmission Lines
 - Conserved Land
 - Cross Vermont Trail
 - Other Trails
 - cemetery
 - Dams
 - Ambulance Service
 - Fire Station
 - Health Clinic
 - Thatcher Brook Primary School
 - Trail Head
 - Roads
- Outdoor Recreation Sites**
- ① Anderson Recreation Field
 - ② Blush Hill Country Club
 - ③ Dascomb P Rowe Field
 - ④ Hope Davey Park
 - ⑤ Mount Mansfield State Forest
 - ⑥ Rusty Parker Park
 - ⑦ Stowe Street Mini Park
 - ⑧ Waterbury Swimming Pool/ Rec Area

Sources:
 Outdoor Recreation Sites: VTrans 1999
 Cross Vermont Trail: CVTA 2010
 Electric Transmission Lines: VCGI 2003
 Sewer and Water System: CVRPC and Town of Waterbury
 Conserved Lands: VCGI 2017
 Map Created 8/23/18 by CVRPC
 N:\Towns\Waterb\Town Plan_2018\
 Facilities and Services 4-1.mxd
 This map is for planning purposes only.
 Data is only as accurate as the original sources.
 This map may contain errors and or omissions.



WATERBURY Land Use Land Classification Map 5-1



Legend

- | | | |
|--|---|--|
| CEMETERY | ROADS & PARKING LOTS | Roads |
| COMMERCIAL/SERVICE | SCHOOLS | Rivers, Lakes, and Ponds |
| GOVERNMENT | OUTDOOR RECREATION | Streams |
| INDUSTRIAL | AGRICULTURE & OPEN LAND | |
| INSTITUTIONAL | FOREST LAND | |
| MIXED RESI. & COMM | SCRUB/SHRUB | |
| RESIDENTIAL | WETLANDS | |



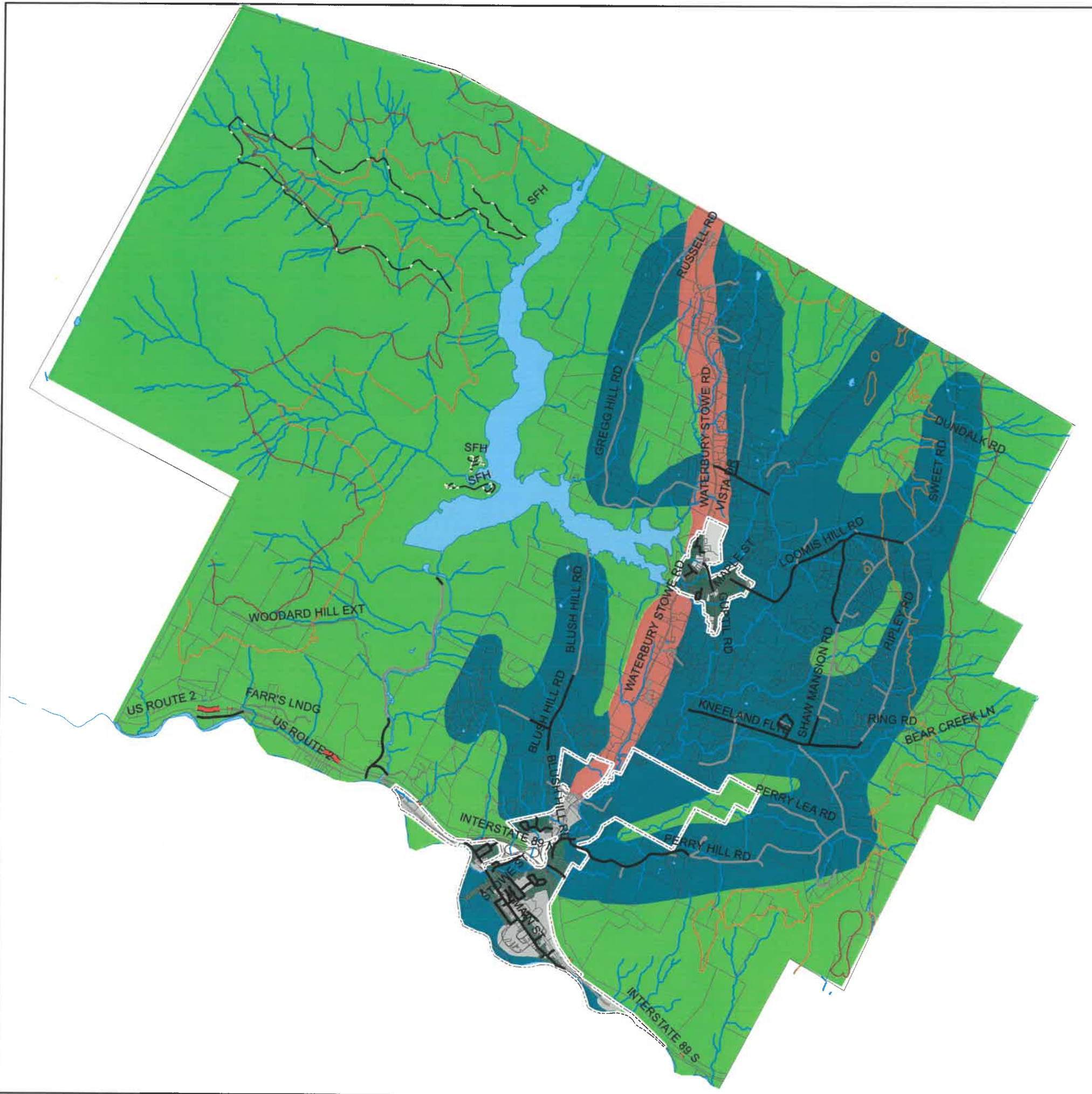
Source:
Waterbury Town Land Use: 2013
Roads: VTrans 2012
Surface Water: VHD 2008

Map created 2018 by CVRPC
Path: N:\Towns\Waterb\Town Plan_2018
Waterbury Land Use Land Classification 5-1.mxd

This map is for planning purposes only.
Data is only as accurate as the original sources.
This map may contain errors and or omissions.



WATERBURY Future Land Use Town Map



Legend

Future Land Use

- Forest
- Route 100 Corrid
- Rural Res/Ag
- Village Resident
- Mixed Use

Roads

- Paved Public Roads
- Unpaved Public Roads
- State Forest Highway
- Paved Private Roads
- Unpaved Private Roads

Contours

- 1200 Feet
- 1500 Feet

- Rivers, Lakes, and Ponds
- Streams
- Waterbury Parcels



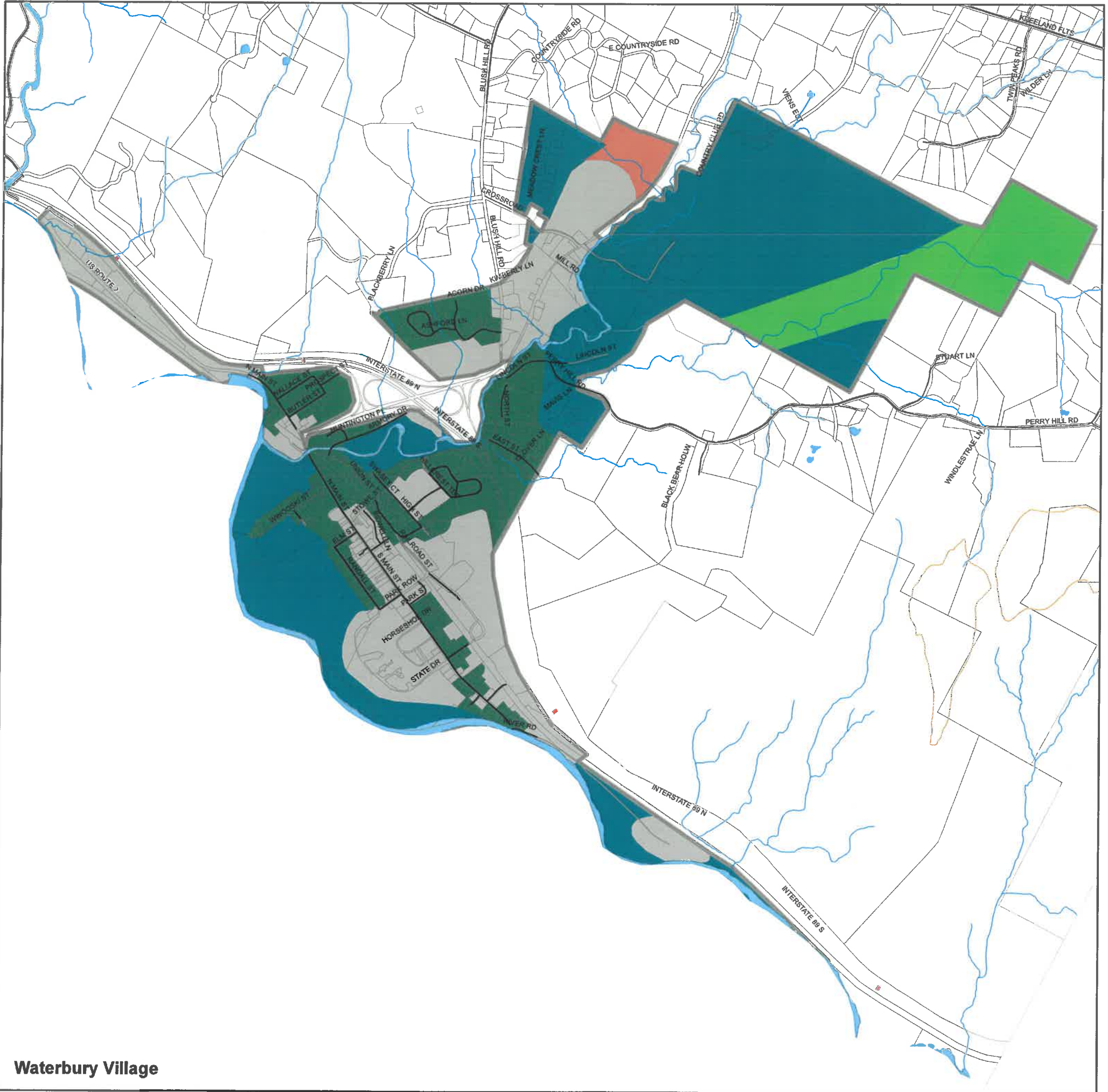
Map 5-2

Source:
 Parcels: 2015
 Waterbury Town Land Use: 2002
 Roads: VTrans 2017
 Surface Water: VHD 2008

Map created 2013 by CVRPC Update 6/27/18
 Path: N:\Towns\Waterb\TownPlan\Future Land Use.mxd

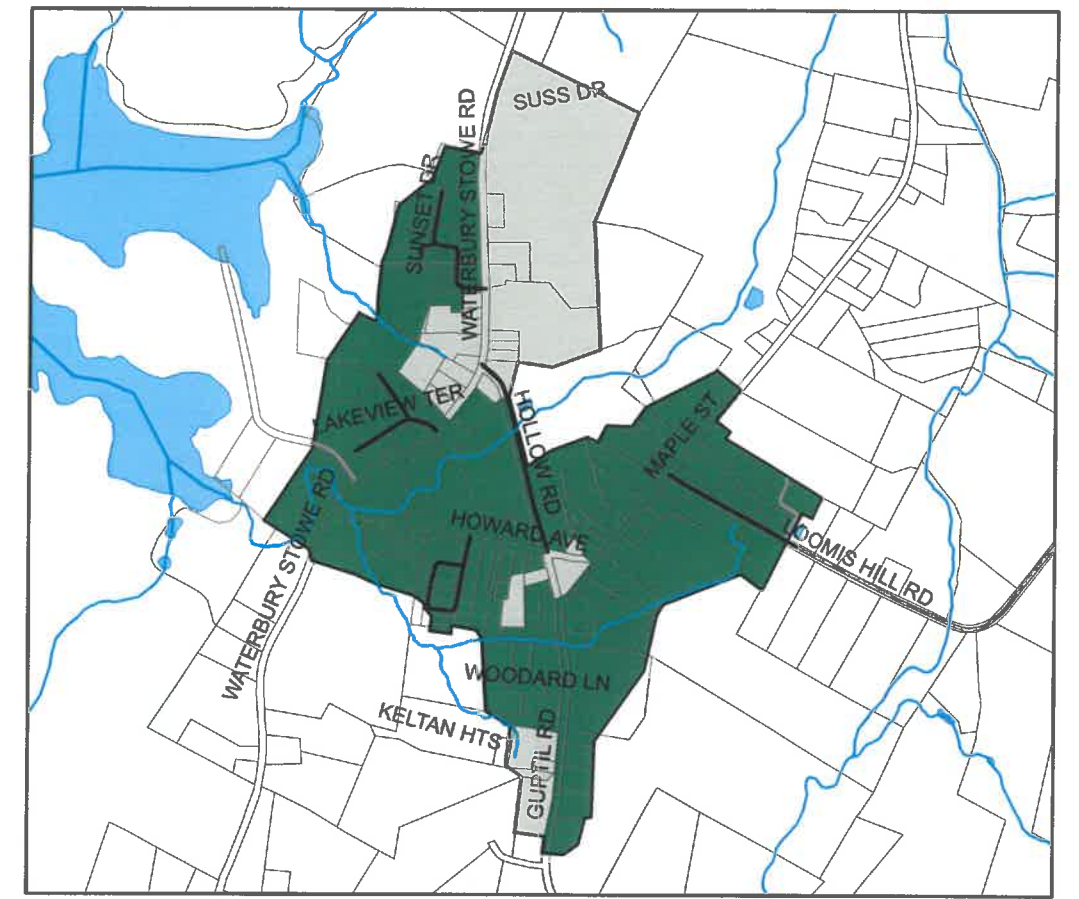
Data is only as accurate as the original source materials.
 This map is for planning purposes only.
 This map may contain errors and or omissions.





Waterbury Village

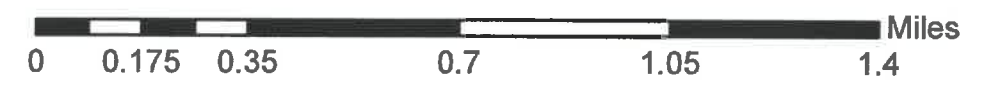
WATERBURY Future Land Use



Waterbury Center

Legend

Future Land Use	Contours	Roads
Forest	1200 Feet	Paved Public Roads
Route 100 Corrid	1500 Feet	Unpaved Public Roads
Rural Res/Ag		State Forest Highway
Village Resident		Paved Private Roads
Mixed Use		Unpaved Private Roads
Growth Center Village Area		Interstate
Waterbury Parcels		Rivers, Lakes, and Ponds
		Streams



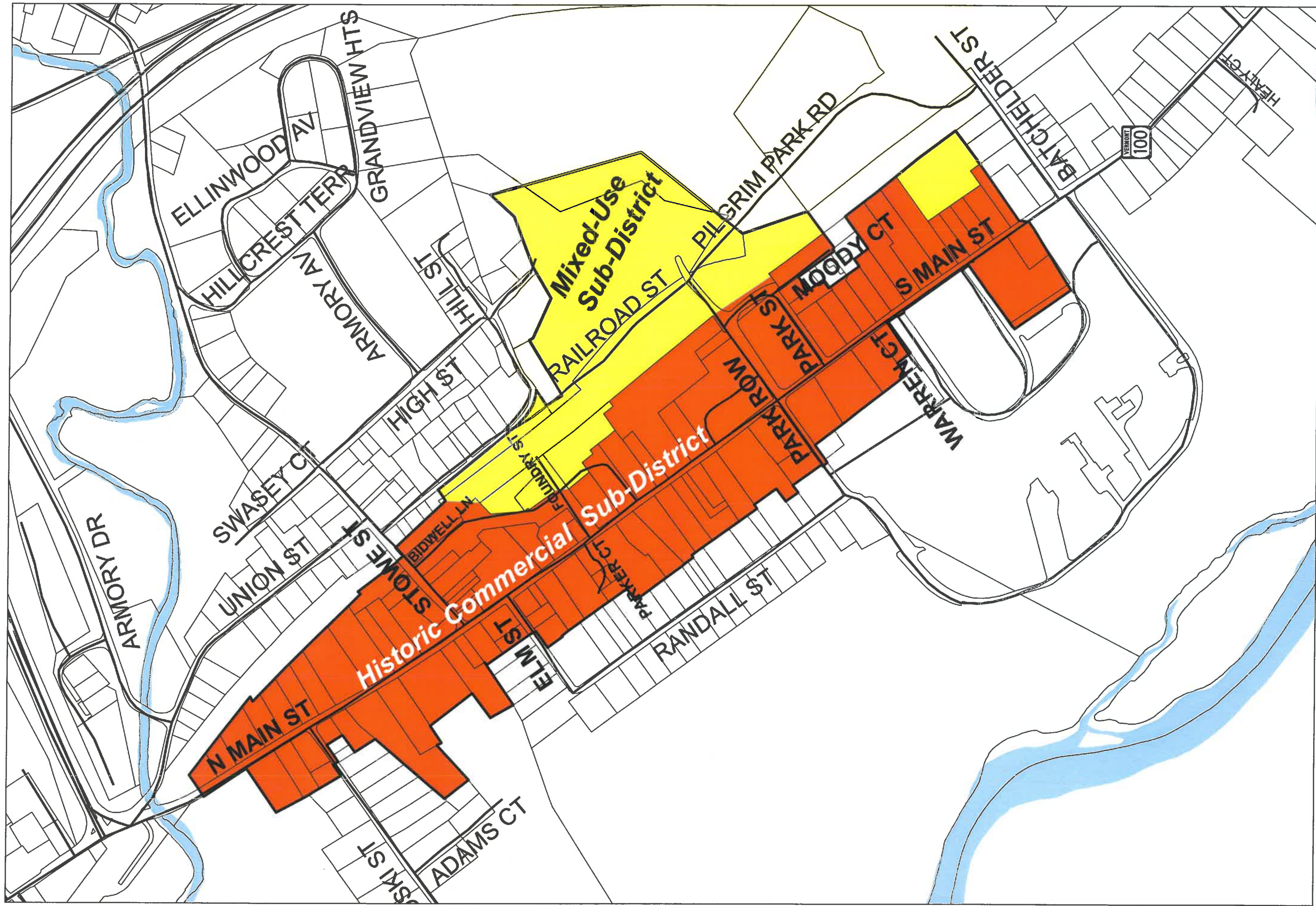
Source:
 Parcels: Waterbury, CVRPC 2015
 Waterbury Village Future Land Use: 2002
 Roads: VTrans 2017
 Surface Water: VHD 2008

Map created 2013 by CVRPC Update 6/27/18
 Path: N:\Towns\Waterbury\TownPlan\Future Land Use- village.mxd

Data is only as accurate as the original source materials.
 This map is for planning purposes only.
 This map may contain errors and omissions.

Map 5-3

Designated Downtown and Downtown Design Review Overlay District



Designated Downtown Sub-Districts

- HISTORIC/COMMERCIAL
- MIXED-USE








Created by CVRPC GIS 2008
 Source:
 Vermont Geographic Information System
 Planning Commission, 2000
 Parcel Map, 2000
 Public Membership File, 1:5,000, 2000
 Map Scale: 1:5,000
 Map Created: 4/18/2008, CVRPC
 Map Edited: 6/26/2008, CVRPC
 N:\Downtown\GIS\MapDocs\MapDocs_LIS_1182.pdf
 This map is for planning only.
 It may contain errors or omissions.

Waterbury Center Village Village Center Designation



Legend

-  Village Center Boundary
-  Waterbury Parcels 2015
- Surface Waters**
-  Rivers, Lakes, and Ponds
-  Streams
-  Building Number

- 1) Green Mountain Seminary Building
- 2) Maple Street Fire Station
- 3) Hope Davey Park
- 4) Waterbury Center Grange Hall



Map 5-5

Map Created 5/31/16 by CVRPC GIS
N:\Towns\Waterb\Projects 2016
Waterbury_Village_Designation.mxd

Sources:
Parcels: Waterbury, 2015
Aerial Photos: VT Orthophotos, 2013

Data is only as accurate as the original source materials.
This map is for planning purposes.
This map may contain errors and omissions.

