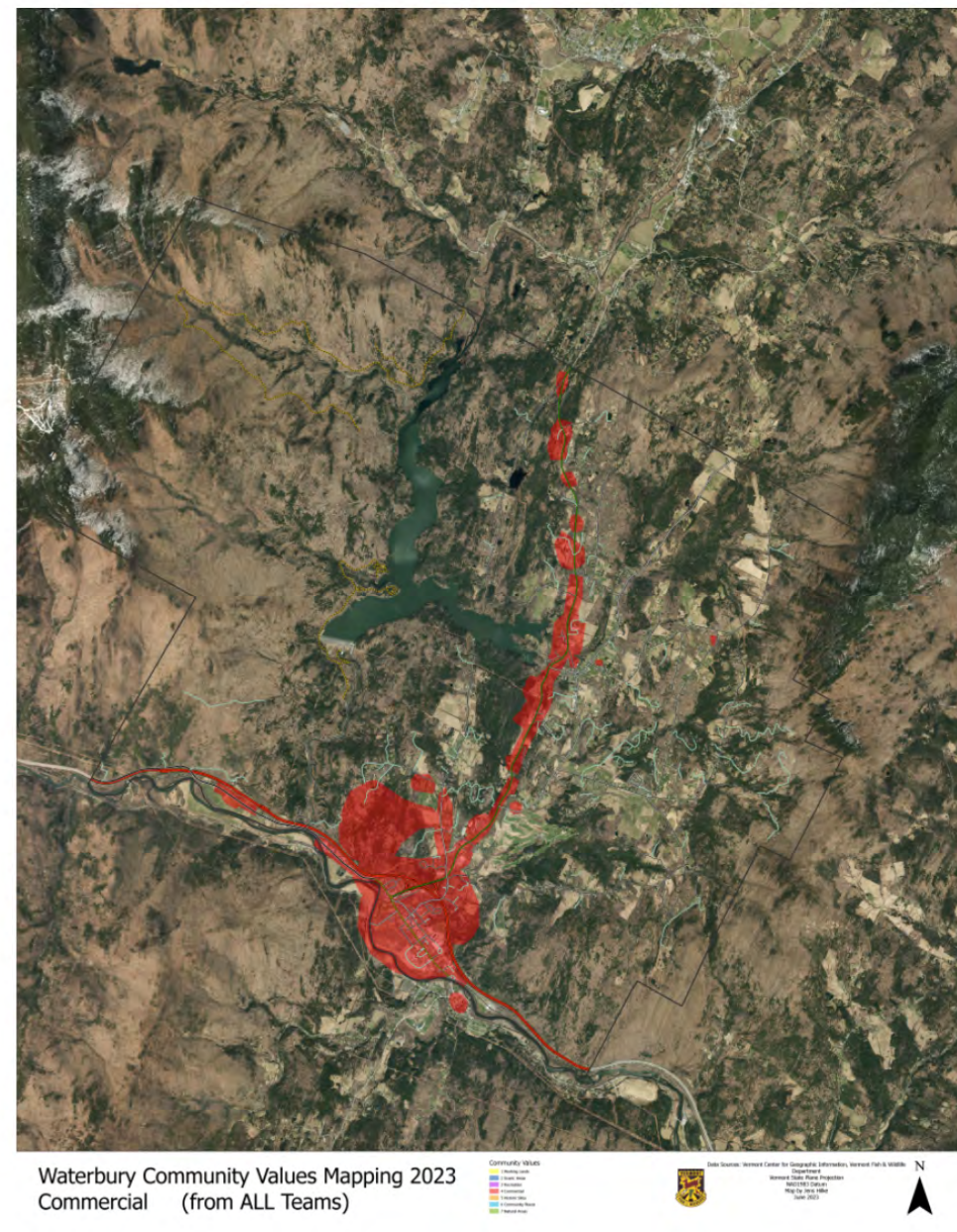
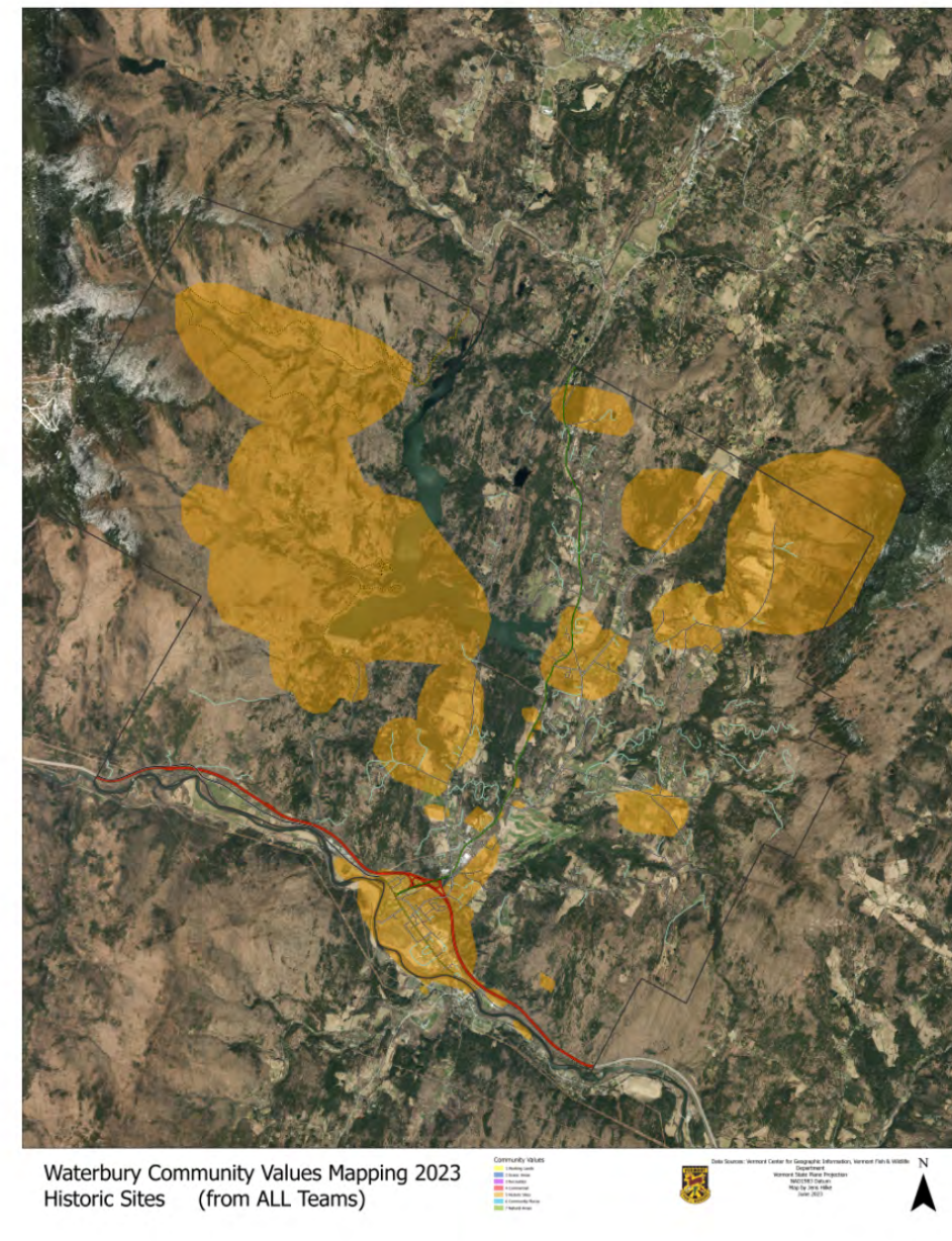


Commercial



Historic



Community Places

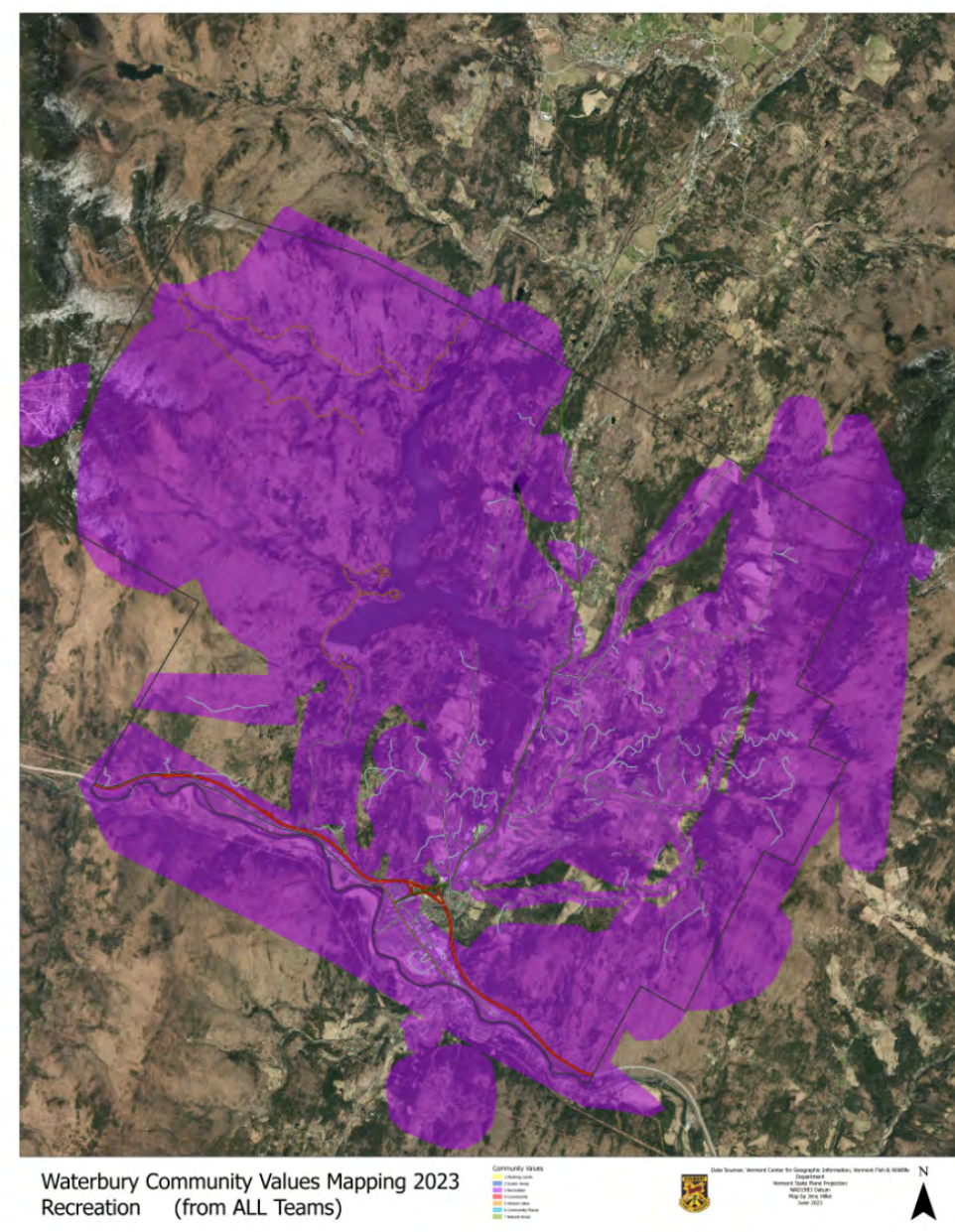


Natural Areas

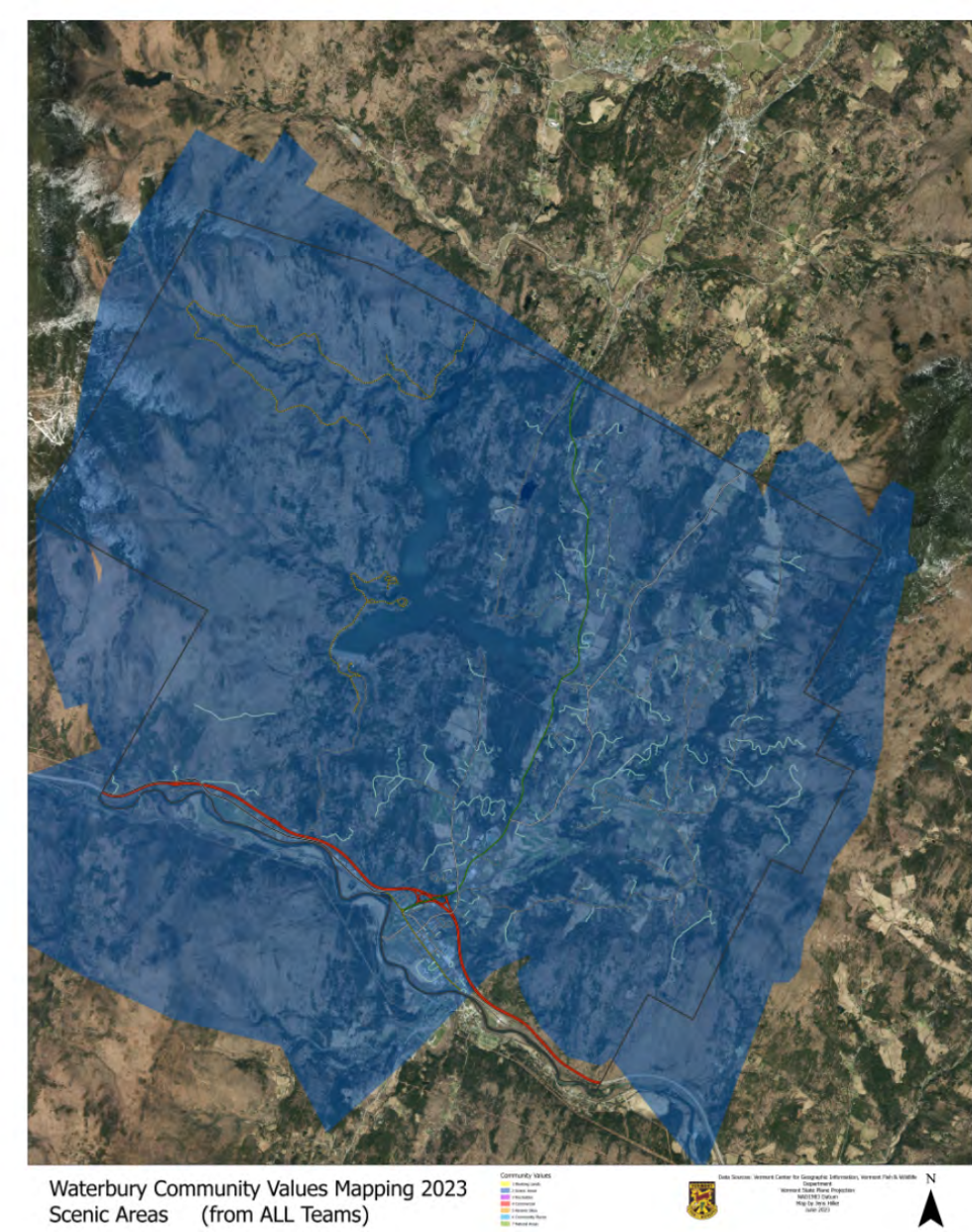


Waterbury Community Values Mapping

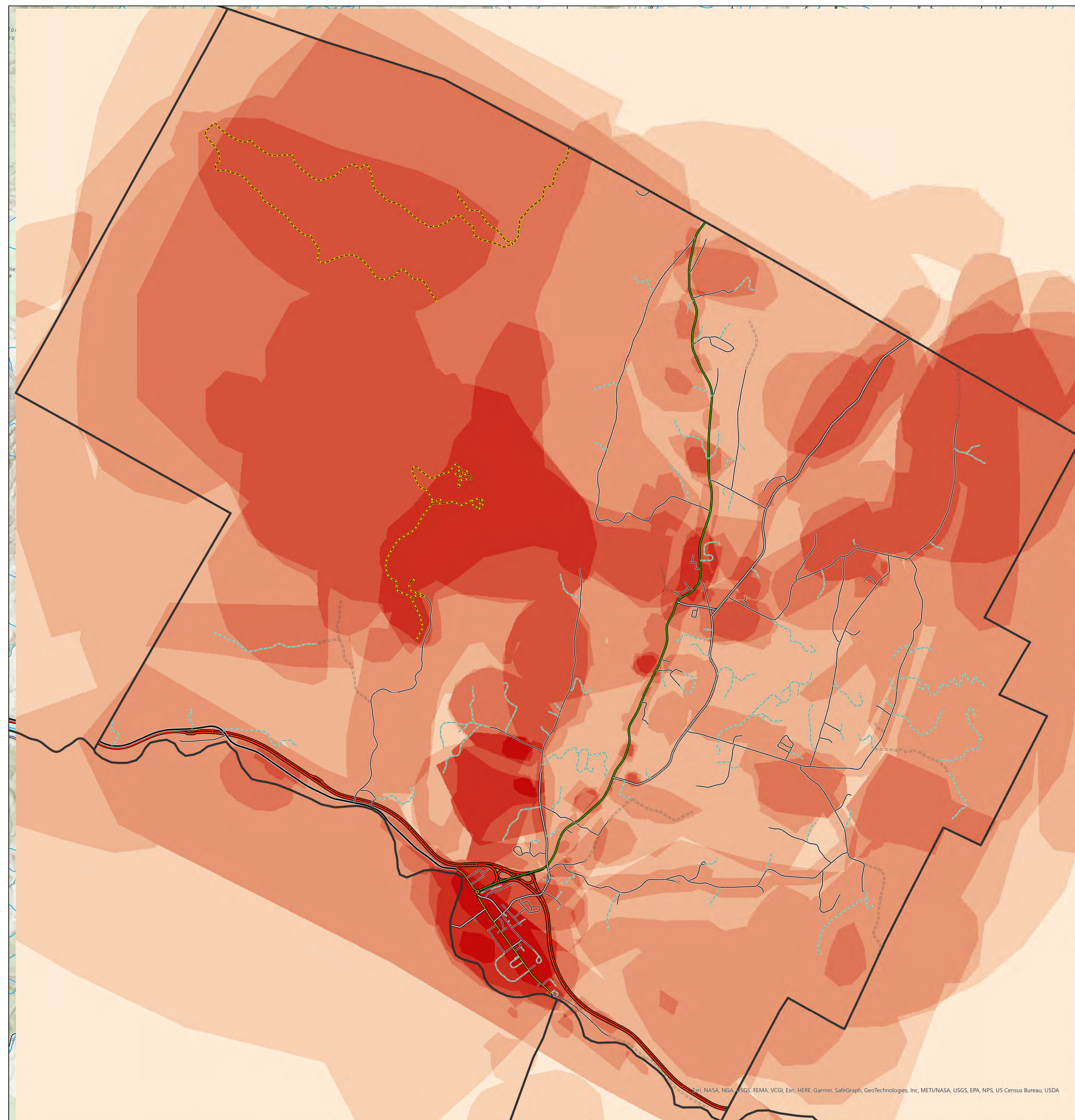
Recreation



Scenic Views

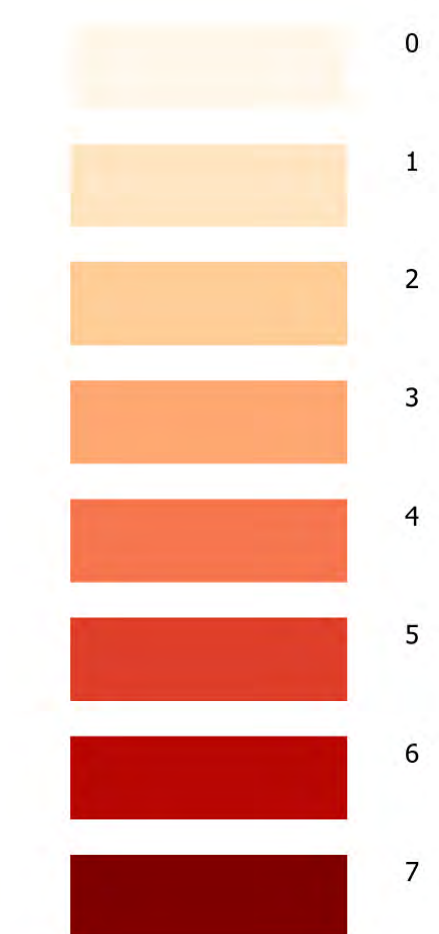


Overlapping Value Groups

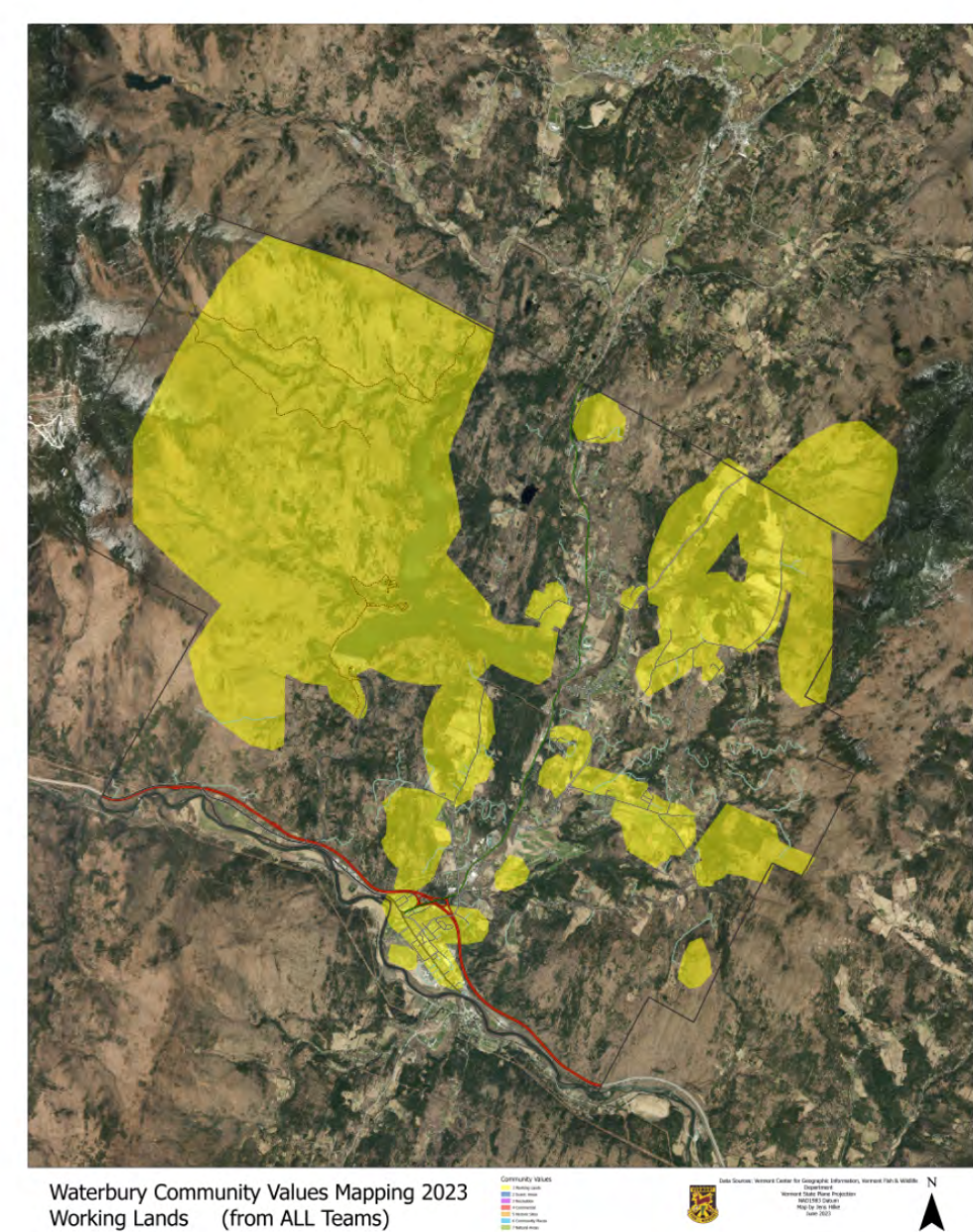


In April, 2023, the Waterbury Conservation Commission hosted a community values mapping event online and in-person to engage residents in learning more about the range of values residents care about. The event was facilitated by Vermont Fish & Wildlife Department. This included an in-person values mapping event on 4/11/23 and an online values mapping activity on 4/20/23. Participants were placed in eight small groups during the in-person event and three small groups online (Teams 9, 10 & 11). Together these responses were combined into eight value groups including: Working landscape, Scenic Views, Recreation, Commercial, Historic, Community Places, & Natural Areas.

Overlapping Value Groups



Working Landscape



Data Sources: Vermont Center for Geographic Information, Vermont Fish & Wildlife Department
Vermont State Plane Projection
NAD1983 Datum
Map by Jens Hilke
June 2023

